

**DESCRIPTION**

- A1 MAIN SWITCHBOARD
- B1 SUB BOARD FOR MOTOR CONTROL
- B2 PILOT LAMP BOX
- B3 PUSHBUTTON BOX
- H1 LIGHT 1
- H2 LIGHT 2
- H3 LIGHT 3
- P1 SOCKET OUTLET 1
- P2 SOCKET OUTLET 2
- S1 KNX SWITCH 1
- S2 KNX SWITCH 2
- S3 KNX SWITCH 3
- PS POWER SUPPLY INLINE
- M1 MOTOR 3 φ

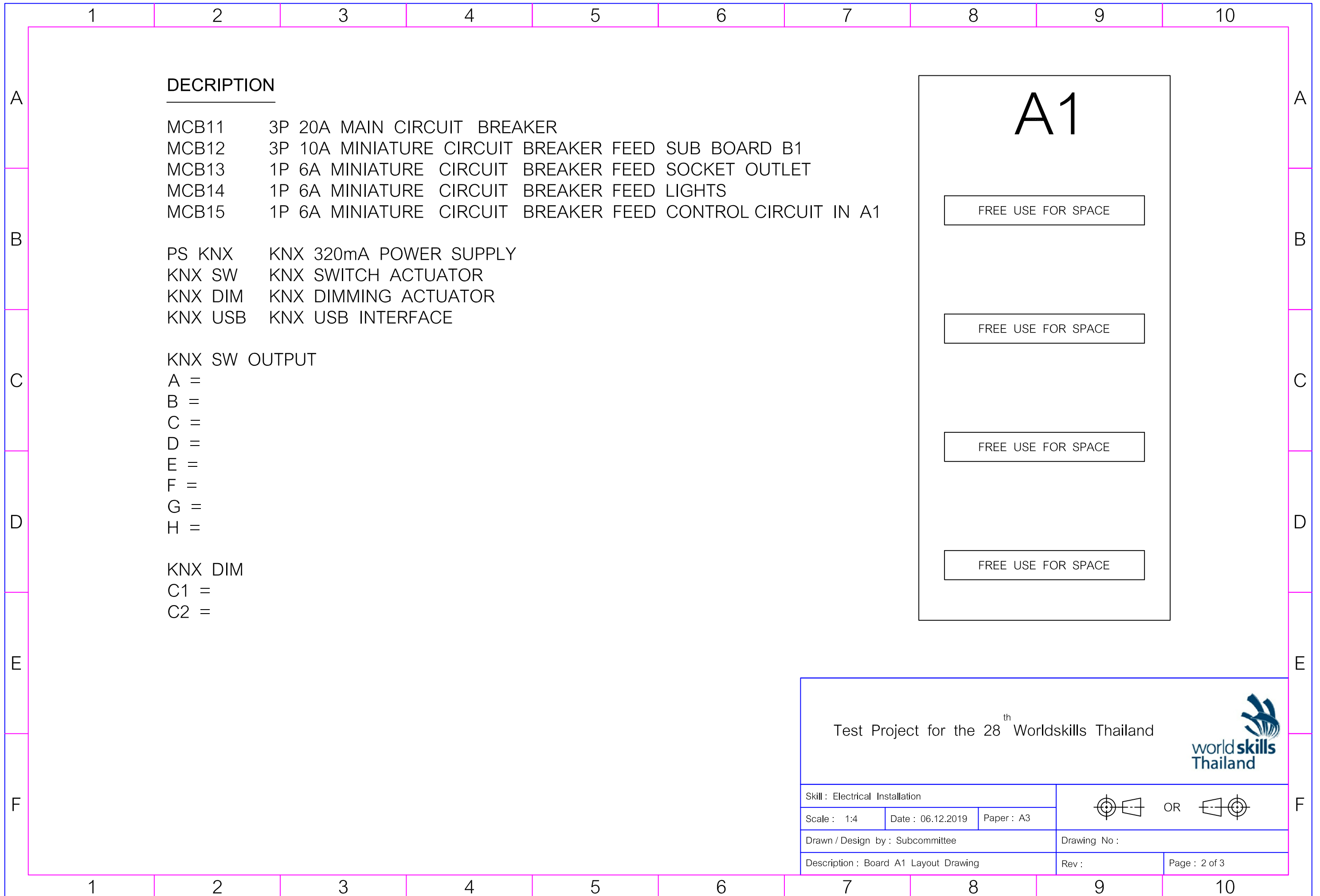
1. WIRE MESH CABLE TRAY 50 x 100 mm. ( H x W )
2. PVC TRUNKING 50 x 50 mm. ( H x W )
3. PVC MINI TRUNKING 16 x 25 mm. ( H x W )
4. PVC CONDUIT 20 mm.
5. EMT CONDUIT 1/2 inch
6. CABLE VCT 4 x 2.5 / 2.5 (G) sq.mm.
6. CABLE VCT 4 x 1.5 sq.mm.
6. CABLE VCT 3 x 1.5 / 1.5 (G) sq.mm.
6. CABLE VCT 2 x 1.5 / 1.5 (G) sq.mm.

GRID SIZE 100 x 100 mm.  
 Ref. Reference Line

Test Project for the 28<sup>th</sup> Worldskills Thailand



Skill : Electrical Installation			OR	
Scale : 1:15	Date : 06.12.2019	Paper : A3	Drawing No :	
Drawn / Design by : Subcommittee			Rev : -	
Description : Layout Drawing			Page : 1 of 3	



**DECRPTION**

MCB11 3P 20A MAIN CIRCUIT BREAKER  
 MCB12 3P 10A MINIATURE CIRCUIT BREAKER FEED SUB BOARD B1  
 MCB13 1P 6A MINIATURE CIRCUIT BREAKER FEED SOCKET OUTLET  
 MCB14 1P 6A MINIATURE CIRCUIT BREAKER FEED LIGHTS  
 MCB15 1P 6A MINIATURE CIRCUIT BREAKER FEED CONTROL CIRCUIT IN A1

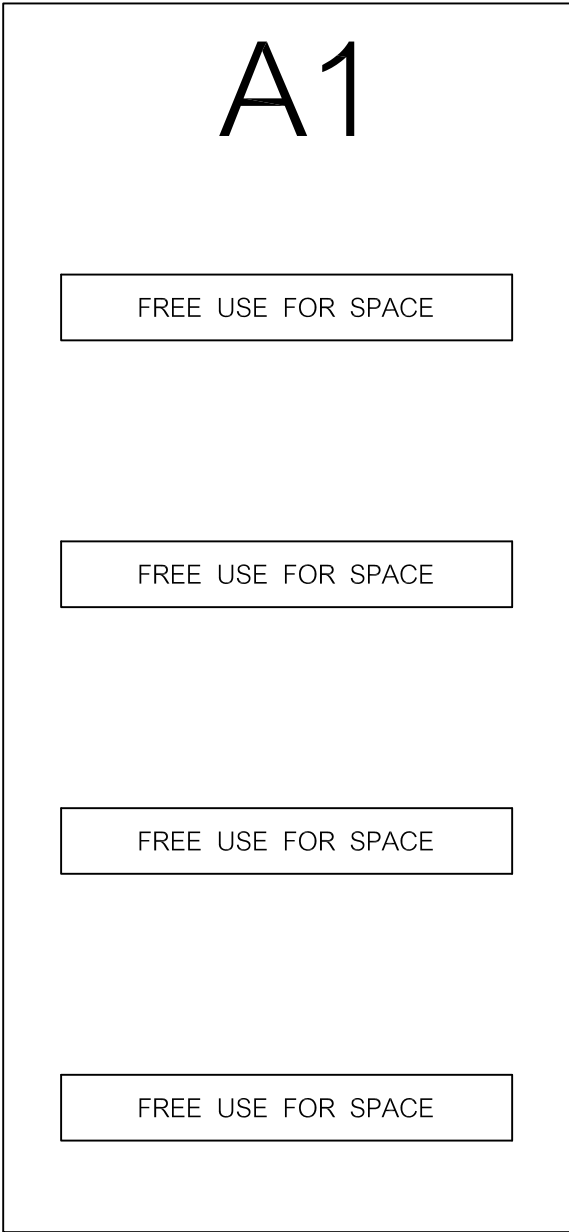
PS KNX KNX 320mA POWER SUPPLY  
 KNX SW KNX SWITCH ACTUATOR  
 KNX DIM KNX DIMMING ACTUATOR  
 KNX USB KNX USB INTERFACE

**KNX SW OUTPUT**

A =  
 B =  
 C =  
 D =  
 E =  
 F =  
 G =  
 H =

**KNX DIM**

C1 =  
 C2 =



Test Project for the 28<sup>th</sup> Worldskills Thailand

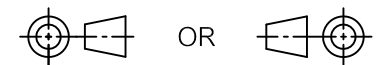


Skill : Electrical Installation

Scale : 1:4    Date : 06.12.2019    Paper : A3

Drawn / Design by : Subcommittee

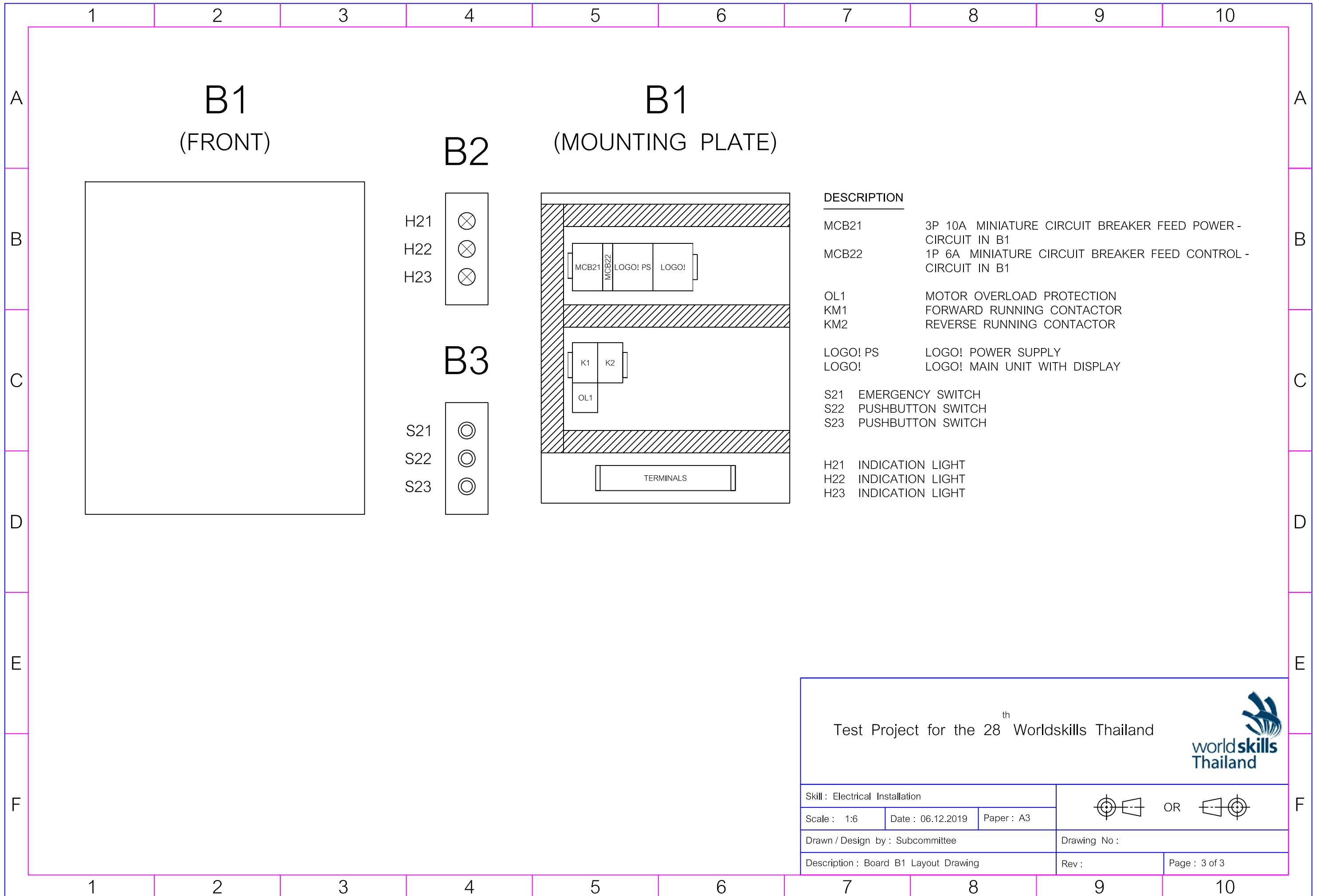
Description : Board A1 Layout Drawing



Drawing No :

Rev :

Page : 2 of 3



**B1**  
(FRONT)

**B1**  
(MOUNTING PLATE)

**B2**

**B3**

**DESCRIPTION**

- MCB21      3P 10A MINIATURE CIRCUIT BREAKER FEED POWER - CIRCUIT IN B1
- MCB22      1P 6A MINIATURE CIRCUIT BREAKER FEED CONTROL - CIRCUIT IN B1
  
- OL1        MOTOR OVERLOAD PROTECTION
- KM1        FORWARD RUNNING CONTACTOR
- KM2        REVERSE RUNNING CONTACTOR
  
- LOGO! PS    LOGO! POWER SUPPLY
- LOGO!       LOGO! MAIN UNIT WITH DISPLAY
  
- S21    EMERGENCY SWITCH
- S22    PUSHBUTTON SWITCH
- S23    PUSHBUTTON SWITCH
  
- H21    INDICATION LIGHT
- H22    INDICATION LIGHT
- H23    INDICATION LIGHT

Test Project for the 28<sup>th</sup> Worldskills Thailand



Skill : Electrical Installation			OR
Scale : 1:6	Date : 06.12.2019	Paper : A3	
Drawn / Design by : Subcommittee			Drawing No :
Description : Board B1 Layout Drawing			Rev : Page : 3 of 3