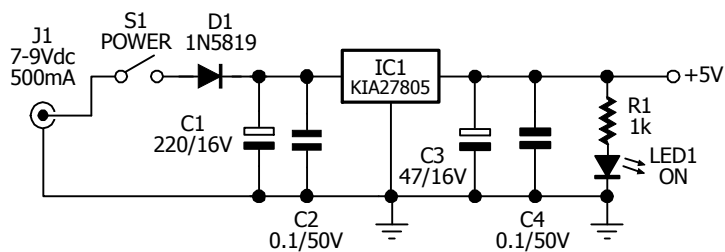
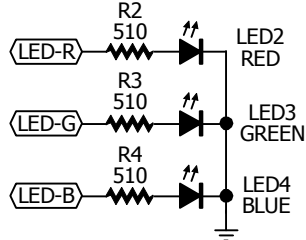


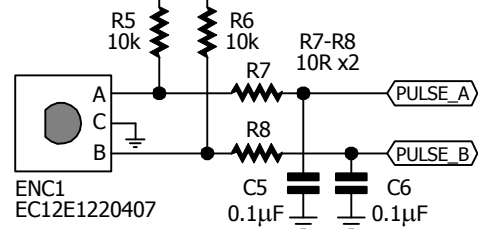
## Power supply



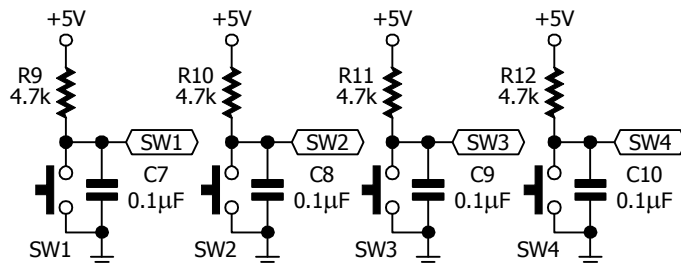
## LED outputs



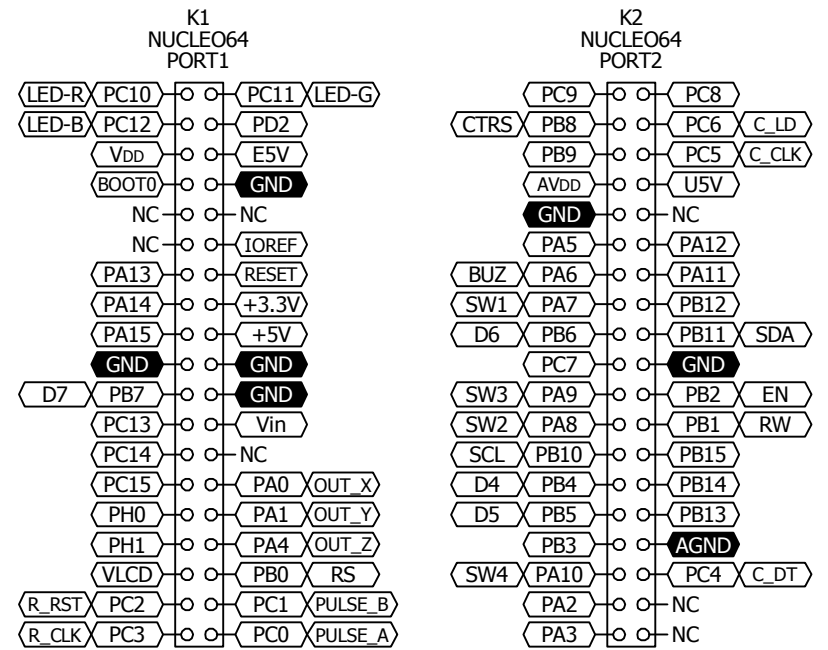
## Encoder



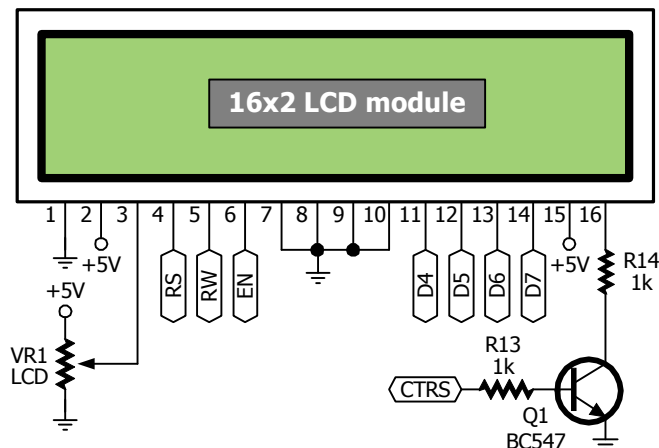
## 4-Button switch inputs



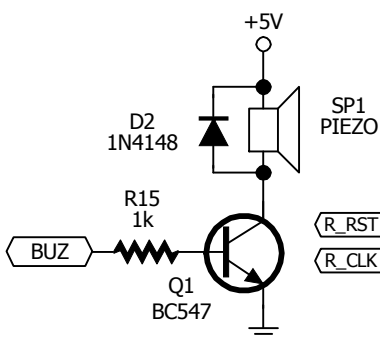
## NUCLEO64-L053R8 PORT



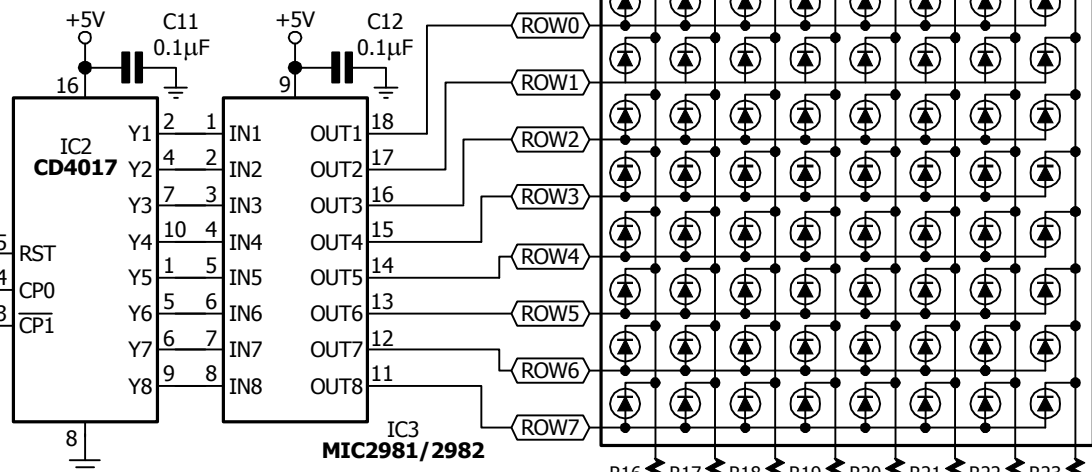
## 16x2 LCD module



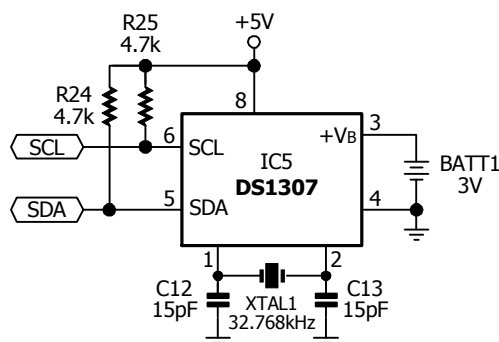
## Piezo speaker driver



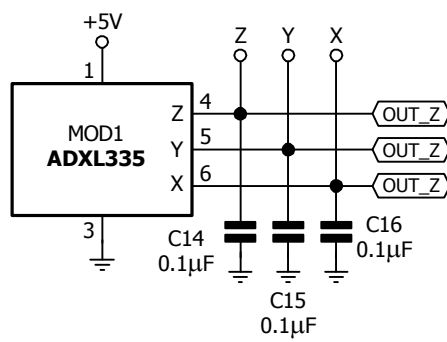
## 8x8 Dot-matrix LED



## Real-time Clock



## 3-axis Accelerometer



## AX-NC64

## Nucleo64-L053R8 Expansion Board Schematic

VERSION 1.3

Update  
Dec.20th, 2019

